

Al-Dy-Sb (Aluminum-Dysprosium-Antimony)

V. Raghavan

An isothermal section at 500 °C was recently determined for this ternary system by [2009Zen]. No ternary phases were found.

Binary Systems

The Al-Dy [Massalski2] phase diagram shows the following intermediate phases: AlDy₂ (C23, Co₂Si-type orthorhombic), Al₂Dy₃ (Zr₃Al₂-type tetragonal), AlDy (ErAl-type orthorhombic), Al₂Dy (C15, MgCu₂-type cubic), αAl₃Dy (D0₂₄, Ni₃Ti-type hexagonal), and βAl₃Dy (stable between 1090 and 1005 °C; HoAl₃-type rhombohedral). The Al-Sb phase diagram [Massalski2] depicts the stoichiometric compound AlSb (B3, Sphalerite-type cubic). The Dy-Sb phase diagram [Massalski2, 2009Zen] has the following intermediate phases: Dy₅Sb₃ (D8₈, Mn₅Si₃-type hexagonal), βDy₄Sb₃, αDy₄Sb₃ (D7₃, Th₃P₄-type cubic), DySb (B1, NaCl-type cubic), and Dy₂Sb₅ (monoclinic, P2₁/m).

Ternary Isothermal Section

With starting metals of 99.9% Al, 99.9% Dy and 99.95% Sb, [2009Zen] arc-melted or induction-melted under Ar atm 21 binary and 55 ternary alloys. The alloys were given a final anneal at 500 °C for 480-960 h and quenched in liquid nitrogen. The phase equilibria were studied with optical and scanning electron metallography and x-ray powder diffraction. The composition and the observed phases for all 76 alloys were listed. The isothermal section constructed by [2009Zen] at 500 °C is shown in Fig. 1. No ternary compound was found. The ternary solubility in the binary compounds was less than 1 at.%. [2009Zen] found that the binary phase αDy₄Sb₃ is not stable at 500 °C.

Reference

2009Zen: L. Zeng, J. He, J. Yan, and W. He, The Phase Equilibria of the Dy-Al-Sb Ternary System at 500 °C, *J. Alloys Compd.*, 2009, **479**, p 173-179

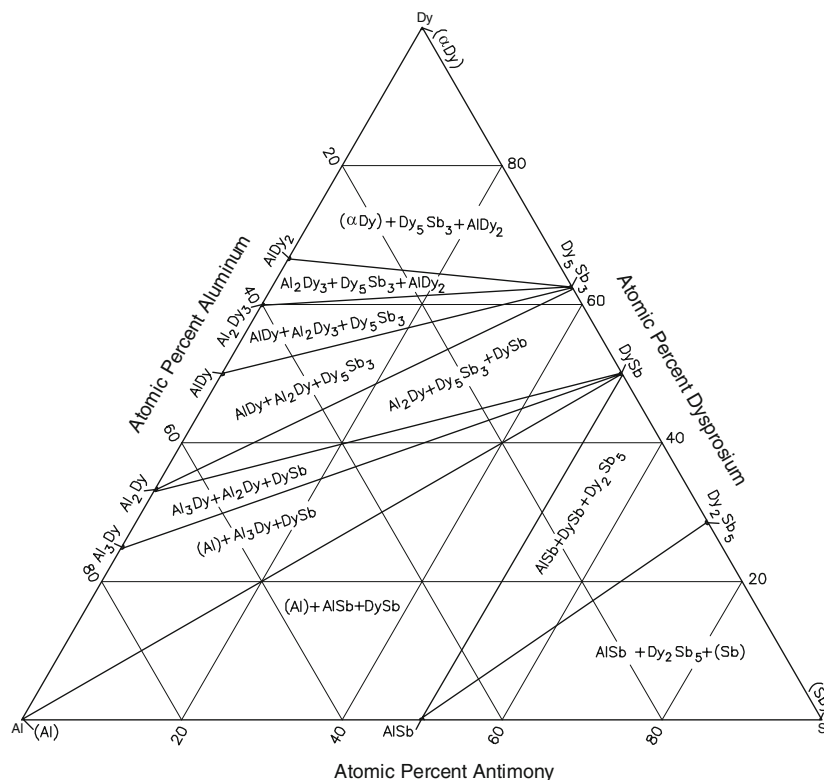


Fig. 1 Al-Dy-Sb isothermal section at 500 °C [2009Zen]. Narrow two-phase regions are omitted